



Netsafe Youth Action Squad ([see Page 2](#))



Kapa Haka Group preparing for Polyfest ([more photos on Page 5](#))

Dear parents, caregivers and students

It was good to see big turnouts for the NCEA sessions and for the Netsafe Keeping Ourselves Safe Online session last week. Please remember that Netsafe is there to help at any time. We have a new student group – the Netsafe Youth Action Squad and you can see details of this on Page 2.

This week the heavy rain on Monday morning meant some localised flooding around the School. Some staff and students needed to change location and a big thank-you to those affected for instant agility.

On Thursday the Kapa Haka Group performed at Polyfest and I am sure that families are so proud of the students, as are all of us here. Wishing the Tongan Group well for their performance on Saturday – livestreaming on Maori television makes it very easy to watch.

Key reminders:

- ❖ Students are to stay home if sick – this includes on assessment dates – contact the dean
- ❖ Take home and enhanced learning components applicable to some courses are now loaded into the Finance section of the KAMAR portal for parents to view. The take home payments are due by Friday 22 April at the latest. The enhanced learning component is voluntary but highly recommended as an enhanced programme cannot be delivered without this vital support. Receiving this component by Friday 22 April means planning can proceed accordingly before the new term starts.

Congratulations to the Premier Cricket team on their win in the Auckland competition – let's hope that this year the December final can go ahead.

We are looking forward to the Online Student Led Conferences next week. Yesterday Year 9-11 parents and caregivers received a reminder about booking – please make sure this is done before 4.00pm next Monday, 28 March.

## Coming up in Week 9....

Mon 28 Mar Summer Tournament Week

### STUDENT LED CONFERENCES & LEARNING SUMMIT

Thursday 31st March &  
Friday 1st April, 2022



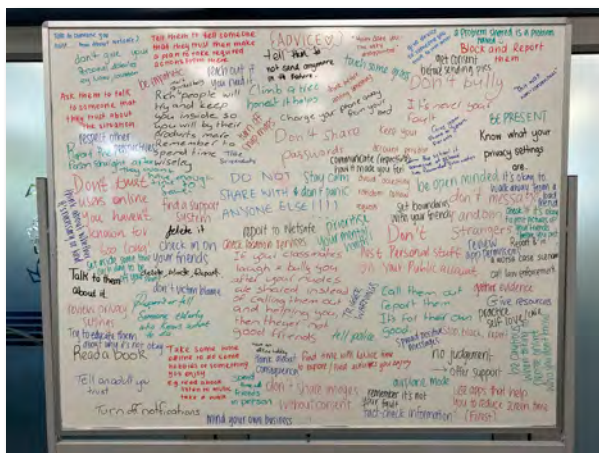
As you know – no rostering home next week – normal classes for everyone Monday to Wednesday and then Year 9-13 students are not onsite for the two days of the conferences.

Finally, once we have detail from the Ministry of Education regarding what the new Covid-19 Health Order means for schools, we will be in touch.

Ngā mihi / Regards  
Lorraine Pound - Principal

## Netsafe Youth Action Squad

Last week 27 students in Years 10 and 11 trained to be part of the Netsafe Youth Action Squad. The YAS programme equips young people with the knowledge and skills to speak up, take action and support each other on the online safety issues that affect them. The team will continue to meet regularly with a Netsafe Ambassador to discuss ways that they can grow understanding, lead social action and inspire positive behaviour in society – so watch this space. Thank you to all participants and to Shelley and Emma from Netsafe. [Find out more about YAS here.](#)



## Gateway @ Epsom Girls Grammar School

Epsom Girls Grammar School is fortunate to be able to offer the Gateway programme to a select group of Year 12 and 13 students. Gateway is an initiative funded by the Tertiary Education Commission and designed to support school students' transition into the workforce by offering them workplace learning while at secondary school.

We work with our selected students to find them work placements (generally about 5 days) in workplaces that align with their career interests. In the past we have had students placed in a broad range of business sectors including construction, agriculture, equine, legal, marketing, finance, retail, hospitality, travel, early childhood, and engineering.

We are currently looking for placements for students in:

- Retail/Fashion
- Floristry
- Digital design/Advertising
- Interior Design
- Law
- General Business/Office roles
- Hospitality
- Allied Health

If you would like to find out more or think you may be able to offer one of our Epsom Gateway students an opportunity to experience a work placement during 2022, please contact Mrs Sonya Sleight at [ssleight@eggs.school.nz](mailto:ssleight@eggs.school.nz)

## From the Drama Department



In Week 7 of Term 1 students from Year 11 Drama visited the park at the historic home, Highwic House on Gillies Ave. They are preparing for site-based drama connected to the land, writing their own scripts for performance.

## From the Science Department



Year 12 Physics learning about half life

A vibrant border of tropical leaves in shades of orange, pink, purple, and teal surrounds the central text.

# PASIFIKA HOMEWORK CENTRE

*WHEN: EVERY WEDNESDAY FROM 3.30 PM TO 4.30 PM*

*WHERE: IN THE JPC*

*STARTS WEDNESDAY 23RD MARCH*

*Everyone is welcome to come along!*

The homework centre is run by the Pasifika committee aiming to cater to your needs academically. There will be teachers and students available to help assist you if you need help with your assessments. This will be on during terms 2 to 3. Come along to the JPC and don't forget to scan the QR code !

For more info contact us through  
• [amirti@apps.eggs.school.nz](mailto:amirti@apps.eggs.school.nz) • [yali@apps.eggs.school.nz](mailto:yali@apps.eggs.school.nz)  
or through our instagram page

 [epsomgirlspasifika](https://www.instagram.com/epsomgirlspasifika)

# ARTS & CULTURAL NEWS

## Pavement Art Competition



On Wednesday 16 March, Art Club and the Visual Arts Leaders held the annual Pavement Art Competition. The Pavement Art theme for 2022 was "Iconic". From Dr Ashley Bloomfield to The Beatles on Abbey Road, a variety of artworks were produced from students of all year levels. A massive congratulations to everyone who participated but also to the groups who placed first and second in the Junior and Senior category.

### Senior placements

1st place - EGGS lion

2nd place - Volodymyr Zelenskyy

### Junior placements

1st place - Spirited Away piece

2nd place - Gumboots

Judged by Mrs Milner, Mrs Spencer and Ms Druitt



## Kapa Haka Group - Polyfest 2022

Tuatahi kai te mihi ki ā tatou kōhine tamāhine, i tū rangatira, i tū kaha, ki runga i te whatārangi inanahi, e mau nei i te ihi o ō rātou mātua tupuna, nō reira rā e hine mā, tēnei te mihi aroha ki a koutou katoa.

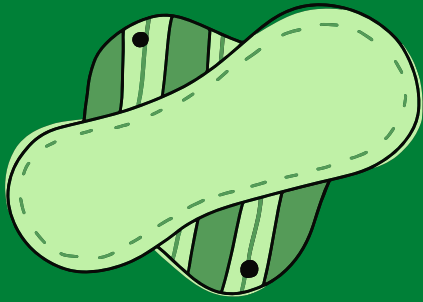
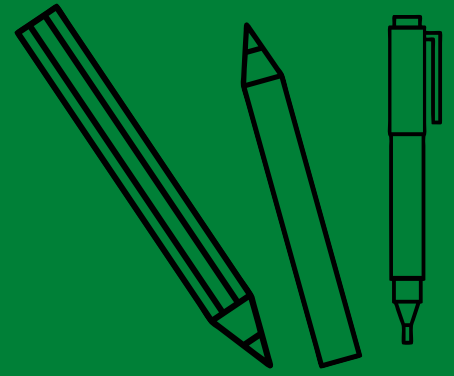
Heartiest congratulations to our girls who represented themselves, their whānau, and the school with such strength, dignity, elegance, pride, and playfulness yesterday. Their performance included two beautiful waiata composed by their talented old girl tutor Sherkquoia Tepana.

Thankyou to their Teacher in charge Whaea Jacqs, and to all the support of whanau and staff. As the saying goes, "Ki te tika ā muri, ka tika ā mua" – "If everything is taken care of out the back, it will all go well out the front."



# PENS

# &



# PADS

**Donate** in the **boxes and bags** provided during tutor time throughout **weeks 7-9 (14th March-1st April)**. The tutor class who donates the most will win a pizza lunch!!

## PADS

The community EGG is accepting whole packs of pads, singular or whole packs of tampons and any other packaged period products for The City Mission.

## PENS

The learning EGG is collecting usable secondhand and new stationery for a local low decile primary school (Waatea School).

# SPORT

## Cricket



Our Premier Cricket team have had some outstanding performances, winning all but one of their games. On the 21st of March they played against league leader St. Cuthbert's College and took out the WIN to guarantee them a spot in the finals against Takapuna 1st XI on Wednesday 23rd March which they also won. Congratulations!!

Next week our Premier side will be representing EGGS at the College Sport T20 National Qualifier Tournament at Keith Hay Park.

## Rowing



Our Rowing Season is coming to an end but not before NZ Secondary Schools Rowing Champs, more commonly known at the AON Maadi cup. This year our rowing squad travels to Twizel to compete at Lake Ruataniwha from Monday 28th March, returning to Auckland on Sunday 3rd April

Our latest Regatta was the North Island Secondary Schools Rowing Champs. At the Regatta, our U18 pair placed 4th in their race. Our U18 4+ placed 2nd in their A Final. Our U15 4+ took out bronze in the A Final. And a special mention to our Novice squad who continue to prove to be fierce competitors, making it into their U18 \*+ final.

Well done to our Rowing Squad!!

## Athletics

Some of our EGGs students competed at the College Sport Auckland Athletics Champs which spanned over the course of three days. Despite our school Athletics Day being cancelled, our competitive students made it out to the competition and represented EGGs well!

## Tennis



Our Premier Tennis team competed at the College Sport Tennis Champs at Scarboro Tennis Centre.

Leah Patuwairua and Isla Morison made the play-offs for Senior Doubles. Leah Patuwairua also made play-offs for Senior Singles.

Jacynta Rakete and Jade Edwards-Bell also made it to the Intermediate Doubles playoff.

## OGA NEWS

Unfortunately, the OGA has not held any events this year. Last year, 2021, was our Centenary year and planned events were postponed due to lockdowns and uncertainties. We had hoped to celebrate this March, but Red Light restrictions meant we cancelled all planned Centenary events.

Instead, we are focussing on the production of our book about the OGA's history over 100-years and this will be how we acknowledge the milestone.

With a view to succession planning for the OGA Committee, we put a call out, via our OGA Facebook page, for new recruits. We were thrilled to receive several expressions of interest, including an Old Girl from Wellington and one from Melbourne, plus two current Year 10 students who are keen to be Student Reps.

Most were able to join our March OGA Committee meeting held via Zoom and it was great to welcome new faces into our midst. The main focus of our meeting was to discuss the future of the OGA. Given all the changes that COVID has engendered, and difficulties in putting on events, we felt it was timely for us to consider what we should offer as we move forward. "Lifelong School Connections" is our Purpose and our discussions had this as a filter. We had a wide-ranging discussion with some great ideas being put forward and these will be explored and discussed further.

We don't want to lose sight of our history and what the OGA has done in the past, and we do want to retain our cornerstone events, but we also want to consider our place in a modern and different world. Tradition is marvellous, but change can be magnificent!



The OGA has always had a close and rewarding relationship with the School and its principals through the years. We are keen to forge deeper connections with current students in the hope that girls will be enticed to engage with the OGA when they graduate. We have social media platforms, a revitalised OGA website and various other ways of retaining valuable connections.

We wish all students a successful year and acknowledge the staff who keep things ticking during such challenging times.

*Sally Blyth & Lynley Sheweiry - OGA Co-Presidents, 2016-2022*

# Whale Tales: Parnell Scavenger Hunt

## Up to \$3000 to be won

Explore your neighbourhood in a whole new light with our prize-packed Parnell scavenger hunt.

As part of the [World Wildlife Foundation Whale Tales campaign](#), Parnell has eight Whale Tails on display; if you have not yet had time to see them all, then here's your opportunity. We've created an exciting outdoor scavenger hunt around Parnell, with up to \$3,000 worth of vouchers up for grabs. Using the Action Track App, our scavenger hunt will take you for a walk around our suburb, with key stops at our Whale Tail sculptures, outdoor spaces, and key historic landmarks. Complete trivia questions and photo challenges to earn points and enter the draw for daily spot prizes. You'll have a nine day period from the **26th March to the 3rd April** to complete the scavenger hunt at your own pace.



## Prizes

Based on the number of points achieved, the first prize drawn will be for \$1,000, and the second will receive \$750 to spend at a Parnell business of your choice.

Some of the stops in our scavenger hunt include photo challenges, and whoever takes our favourite photo can choose a place in Parnell to spend \$500.

There are also opportunities around our trail to enter the draw to win spot prizes, with winners being drawn daily, so you can have an opportunity to support some of our local cafés at this time.

With places to see and prizes to win, you're sure to discover something new when you set out on our scavenger hunt. So come and make the most of the last summery days with a trip around Parnell like no other.

[Find more information about the scavenger hunt here.](#)

## OUTWARD BOUND NZ YOUTH ACTIVATE

The fully funded Youth Activate is an 8 day course for physically disabled youth aged 16-17 years. Our next course date is **10-17 May 2022**.

[> Find more information about Youth Activate here.](#)

## LEAPS & BOUNDS ACTIVATE

The fully funded Leaps & Bounds Activate 8 day course is for physically disabled youth (13 to 16yrs) and their parent or caregiver. Our next course date is **10-17 October 2022**.

[> Find more information about Leaps & Bounds Activate here.](#)

